

# TOTAL

CLOTHING

YOUR SCHOOL UNIFORM SUPPLIER

## EARLY BIRD OFFER

*Get this...*

**ULTIMATE HELIX OXFORD  
SCHOOL ESSENTIALS  
PENCIL CASE**

**For £8.00**

(RRP £15.00)

*Offer available from  
25th May until  
16th July 2021*



**Contains:** 1x Large Clear Pencil Case | 1x Oxford Maths Set  
30 cm Shatterproof Ruler | 4 Pack of Oxford Soft Grip Pens  
Box of 12 2H pencils | 12 pack of Oxford Colouring Pencils  
1x Large Sleeved Eraser and Sharpener Set  
and a Pack of 4 Oxford Highlighters.



**SCHOOLS**



**ETONBURY**  
ACADEMY

## UNIFORM GUIDE AND PRICE LIST

[www.totalclothingshop.co.uk/etonbury](http://www.totalclothingshop.co.uk/etonbury)

Like us on  
**facebook**



*To stay up to date  
with our latest offers.*

Please check our website: [www.totalclothing.co.uk](http://www.totalclothing.co.uk)  
for the latest information updates.

PLEASE ORDER BY  
**THURSDAY 12th AUGUST**  
For delivery before  
back to school.

## INTRODUCTION

### Dear Parents & Carers

Watch this [video](#) for all of the Etonbury Academy uniform requirements and helpful sizing hints.

We have designed this booklet to help you to order your school uniform with ease, whilst understanding the requirements from the school. Given the current Covid-19 situation, we have added some additional information to try and make it as easy as possible.

We understand how difficult it can be when you are buying secondary school uniform for the first time (or even second or third time) as children's sizes can be so different. With this in mind, we have designed this booklet to help you every step of the way.

We start with a [Uniform Measuring Guide](#) to ensure that you measure correctly for each garment. On this page you will see how to measure for each part of the school uniform you will need.

We have also included a [Hints & Tips](#) section on buying your school uniform.

You will also see a [Uniform Policy](#) which tells you how the uniform should be worn and what is not acceptable.

On the pages that follow there is a comprehensive [Uniform Size Guide](#) detailing the garments required for your school uniform. Garments will be marked compulsory and optional so you can see what you need to buy now and what you can maybe purchase later.

We always encourage parents to order as soon as possible to ensure you will have the correct uniform for back to school.

Lastly you will see the link to order your school uniform on-line. This can be done via your school website.

We have a returns policy of 28 days from your purchase to return or exchange of your garments. It would be great if you could send returns as soon as possible to help our stock levels.

We are here to help you get the best fit for school uniform for your child. If you have any questions please call our friendly customer care team on **01733 394758** or via email at [customerservices@totalclothing.co.uk](mailto:customerservices@totalclothing.co.uk) who will be happy to advise you.

Kind regards

**Christine, James, Ben and Janet**

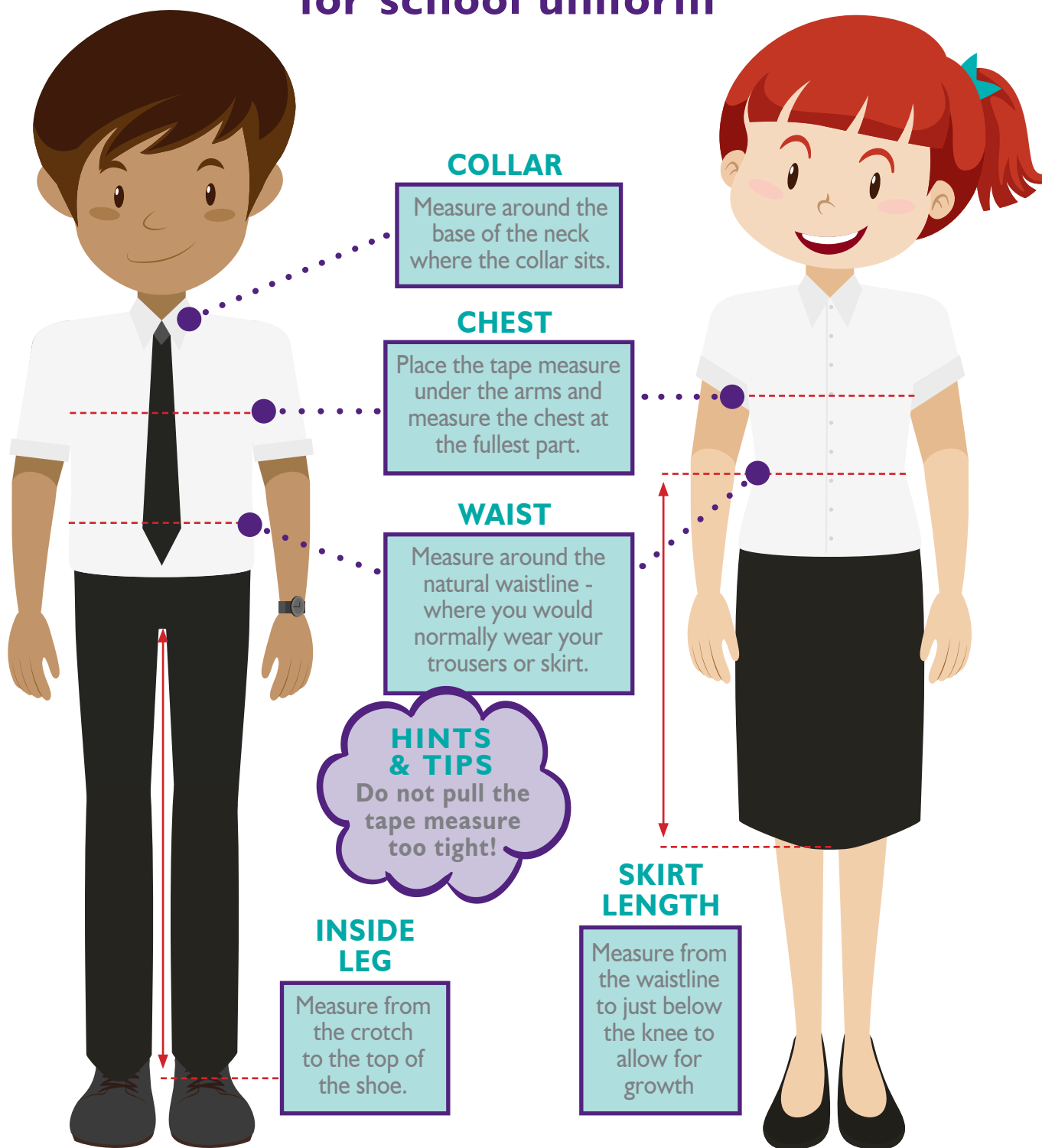
**The Schools Team | Total Clothing, part of F R Monkhouse Ltd**



SCHOOLS

## UNIFORM MEASURING GUIDE

### How to measure your child for school uniform



## ETONBURY ACADEMY | GENERAL UNIFORM

### YEARS 5 & YEAR 6

#### (BOYS FIT) (GIRLS FIT)

Etonbury jumper <i>(with badge)</i>	Etonbury jumper <i>(with badge)</i>
White button neck shirt <i>(long or short sleeved)</i>	White open neck blouse
Etonbury tie	Grey trousers or skirt
Grey trousers <i>(NOT skinny fit)</i>	Navy knee high socks/tights
Plain black or navy socks	<i>(White ankle socks optional Summer term)</i>
Black leather shoes	Black leather shoes

### YEARS 7 & ABOVE

#### (BOYS FIT) (GIRLS FIT)

Etonbury blazer	Etonbury blazer
Etonbury jumper <i>(optional)</i>	Etonbury jumper <i>(optional)</i>
White button neck shirt <i>(long or short sleeved)</i>	White open neck blouse
Etonbury tie	Etonbury skirt or grey trousers
Grey trousers <i>(NOT skinny fit)</i>	Navy knee high socks/tights
Plain black or navy socks	<i>(White ankle socks optional Summer term)</i>
Black leather shoes	Black leather shoes

### PE KIT (All Years)

#### (BOYS FIT) (GIRLS FIT)

Etonbury Polo shirt	Etonbury Polo shirt
Navy Blue shorts	Navy blue skort or shorts
Etonbury reversible outdoor top	Etonbury reversible outdoor top
Navy Fleece with logo <i>(optional)</i>	Navy Fleece with logo <i>(optional)</i>
Navy Blue socks <i>(knee high)</i>	Navy Blue socks <i>(knee high)</i>
Trainers	Trainers
Football boots <i>(astro turf boots are not suitable)</i>	Football boots <i>(astro turf boots are not suitable)</i>
Navy blue tracksuit bottoms <i>(optional)</i>	Navy blue tracksuit bottoms <i>(optional)</i>
Baselayer of any colour <i>(optional)</i>	Baselayer of any colour <i>(optional)</i>
Gum shield	Gum shield
Shin pads	Shin pads



SCHOOLS

## HINTS & TIPS | SPECIFIC TO YOUR SCHOOL

### **HINTS & TIPS** **YEAR 7-11 SKIRTS**

Skirts have an adjustable waist.  
Fit just below the knee to  
allow for growth.

### **HINTS & TIPS** **SCHOOL TIES**

Girls do not need to wear a tie.  
Therefore make sure you purchase  
'Rever Collar Blouses' as opposed  
to button-up blouses.

### **HINTS & TIPS** **BLAZERS**

You may want to go for a slightly bigger  
blazer size if your child will be wearing  
a jumper during the winter months.  
Make sure when you try on your blazer  
the sleeves come down to the knuckles  
to allow for growth and across  
the shoulders there is  
also room for growth.

### **HINTS & TIPS** **SCHOOL TIES**

There are two lengths  
of ties available  
(see webshop).

### **HINTS & TIPS** **BOYS TROUSERS**

These fit true to  
size and have an  
adjustable waist.

### **HINTS & TIPS** **PE TOPS**

PE Tops should always be bought  
slightly bigger to allow for growth  
and ease of taking on and off in a  
hurry when changing.

### **HINTS & TIPS** **PE SHORTS**

The PE Shorts have a draw  
string to pull the waist  
in tighter.

### **HINTS & TIPS** **SKORTS**

These come in waist  
sizes and have an  
elasticated waist, use your  
skirt waist measurement  
as a guide.

### **HINTS & TIPS** **DON'T FORGET**

Don't forget name labels, water bottles  
and mouth guards!

## ETONBURY ACADEMY | YEARS 5 & 6 UNIFORM



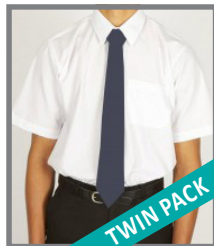
### ETONBURY MAGICFIT V NECK JUMPER (Compulsory)

CHEST 26 CHEST 28 CHEST 30 CHEST 32 CHEST 34 CHEST 36

Soft handle but hard wearing. Ribbed cuffs and welt. Chest size 28in - 36in

From £15.00

QUANTITY/SIZE REQUIRED



### ETONBURY BOYS FIT SHORT SLEEVE SHIRTS

NECK 11 NECK 11.5 NECK 12.5 NECK 13.5 NECK 13 NECK 14 NECK 14.5 NECK 15 NECK 15.5 NECK 16 NECK 16.5 NECK 17

Two piece collar, chest pocket and short sleeves. Collar sizes available 12.5 inches to 17 inches. Easy care and machine washable. Twin pack.

From £13.00

QUANTITY/SIZE REQUIRED



### ETONBURY BOYS FIT LONG SLEEVE SHIRTS

NECK 11 NECK 11.5 NECK 12.5 NECK 13.5 NECK 13 NECK 14 NECK 14.5 NECK 15 NECK 15.5 NECK 16 NECK 16.5 NECK 17

Two piece collar, chest pocket, rounded cuff with two button fastening. Twin pack. Easy care and machine washable. Available in collar size 12.5 inches to 17 inches

From £13.00

QUANTITY/SIZE REQUIRED



### ETONBURY GIRLS FIT SHORT SLEEVE REVER COLLAR BLOUSES

CHEST 26 CHEST 28 CHEST 30 CHEST 32 CHEST 34 CHEST 36 CHEST 38 CHEST 40 CHEST 42 CHEST 44

Short sleeve blouses in easycare fabric, with a two piece collar. Twin pack. Machine washable and easy care. Sizes available 26 inches to 44 inches.

From £13.50

QUANTITY/SIZE REQUIRED



### ETONBURY SLIMBRIDGE UNISEX TROUSERS

W/L 26/28 W/L 28/30 W/L 30/30 W/L 30/32 W/L 30/34 W/L 32/30 W/L 32/32 W/L 32/34 W/L 34/32 W/L 34/34 W/L 36/32  
REGULAR REGULAR SHORT REGULAR LONG SHORT REGULAR LONG REGULAR LONG REGULAR

Grey fashionable slim fit unisex trousers. Flat front. Internal waist adjuster. Two side pockets plus back pocket with button. Belt loops.

From £17.50

QUANTITY/SIZE REQUIRED



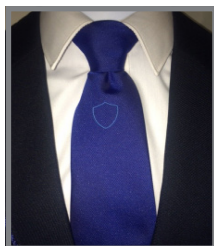
### ETONBURY GIRLS FIT STITCH DOWN PLEAT SKIRT

AGE 9 AGE 10 AGE 11 AGE 12

All round stitched down grey pleat skirt. Zip fastening on ages 10 and above. Internal waist adjuster. Sizes are as follows - 9 Years W: 23.5 x L: 15.5 inches. 10 Years W: 24.5 x L: 16 inches. 11 Years W: 25 x L: 17 inches. 12 Years W: 25.5 x L: 17.5 inches.

From £13.50

QUANTITY/SIZE REQUIRED



### ETONBURY CLIP ON TIE (Compulsory)

Made from 100% Polyester.

From £6.99

QUANTITY/SIZE REQUIRED

# ETONBURY ACADEMY | YEARS 7, 8, 9 & 10 UNIFORM



## ETONBURY BOYS FIT BLAZER (Compulsory)

CHEST 28 CHEST 30 CHEST 32 CHEST 34 CHEST 36 CHEST 38 CHEST 40 CHEST 42 CHEST 44 CHEST 46

Made from 100% woven Polyester twill. With internal zip pockets, Maxtech Plus stain resistant finish. Available in Chest Sizes to fit 28in, 30in, 32in, 34in, 36in, 38in, 40in, 42in, 44in and 46in.

From £28.00

QUANTITY/SIZE REQUIRED



## ETONBURY GIRLS FIT BLAZER (Compulsory)

CHEST 28 CHEST 30 CHEST 32 CHEST 34 CHEST 36 CHEST 38 CHEST 40 CHEST 42 CHEST 44 CHEST 46

SIZE 6 SIZE 8 SIZE 10 SIZE 12 SIZE 14 SIZE 16 SIZE 18 SIZE 20 SIZE 22 SIZE 24

Made from 100% woven Polyester twill. With internal zip pockets, Maxtech Plus stain resistant finish.

From £28.00

QUANTITY/SIZE REQUIRED



## ETONBURY MAGICFIT V NECK JUMPER (Optional)

CHEST 26 CHEST 28 CHEST 30 CHEST 32 CHEST 34 CHEST 36 CHEST 38 CHEST 40

Soft handle but hard wearing. Ribbed cuffs and welt.

From £15.00

QUANTITY/SIZE REQUIRED



## ETONBURY BOYS LONG SLEEVE SHIRTS

NECK 11 NECK 11.5 NECK 12 NECK 12.5 NECK 13 NECK 13.5 NECK 14 NECK 14.5 NECK 15 NECK 15.5

NECK 16 NECK 16.5 NECK 17

Two piece collar, chest pocket, rounded cuff with two button fastening and gauntlet opening. Twin pack. Easy care and machine washable.

From £13.00

QUANTITY/SIZE REQUIRED



## ETONBURY BOYS SHORT SLEEVE SHIRTS

NECK 11 NECK 11.5 NECK 12 NECK 12.5 NECK 13 NECK 13.5 NECK 14 NECK 14.5 NECK 15 NECK 15.5

NECK 16 NECK 16.5 NECK 17

Two piece collar, chest pocket and short sleeves. Easy care and machine washable. Twin pack.

From £13.00

QUANTITY/SIZE REQUIRED



## ETONBURY GIRLS FIT SHORT SLEEVE REVER COLLAR BLOUSES

CHEST 26 CHEST 28 CHEST 30 CHEST 32 CHEST 34 CHEST 36 CHEST 38 CHEST 40 CHEST 42 CHEST 44

Short sleeve blouses in easycare fabric, with a two piece collar. Twin pack. Machine washable and easy care. Sizes available 26 inches to 44 inches.

From £13.50

QUANTITY/SIZE REQUIRED



## ETONBURY GIRLS FIT LONG SLEEVE REVER COLLAR BLOUSES

CHEST 26 CHEST 28 CHEST 30 CHEST 32 CHEST 34 CHEST 36 CHEST 38 CHEST 40 CHEST 42 CHEST 44

Short sleeve blouses in easycare fabric, with a two piece collar. Twin pack. Machine washable and easy care. Sizes available 26 inches to 44 inches.

From £13.50

QUANTITY/SIZE REQUIRED



# ETONBURY ACADEMY | YEARS 7, 8, 9 & 10 UNIFORM



## ETONBURY BOYS SLIMBRIDGE UNISEX TROUSERS

W/L 26/28	W/L 28/30	W/L 30/30	W/L 30/32	W/L 30/34	W/L 32/30	W/L 32/32	W/L 32/34	W/L 34/32	W/L 34/34	W/L 36/32
REGULAR	REGULAR	SHORT	REGULAR	LONG	SHORT	REGULAR	LONG	REGULAR	LONG	REGULAR

Grey, fashionable slim fit. Flat front. Internal waist adjuster. Two side pockets plus back pocket with button. Belt loops.

From **£17.50**

QUANTITY/SIZE REQUIRED



## ETONBURY GIRLS FIT TWIN POCKET TROUSERS

AGE 9	AGE 10	AGE 22/28	W/L 22/30	W/L 24/28	W/L 24/30	W/L 26/28	W/L 26/30	W/L 28/28	W/L 28/30	W/L 30/30
W/L 32/30	W/L 32/32	W/L 34/30	W/L 36/30	Grey, senior trouser with slim leg shape and two front welt pockets. Back waist button tab detail						

From **£16.99**

QUANTITY/SIZE REQUIRED



## ETONBURY GIRLS SLIM LEG TROUSER

W/L 22/28	W/L 22/30	W/L 24/28	W/L 24/30	W/L 26/28	W/L 26/30	W/L 28/28	W/L 28/30	W/L 30/28	W/L 30/30
W/L 32/30	W/L 32/32	W/L 34/30	W/L 36/30	Grey slim leg girls trouser. Front pocket. Contrast internal binding. Internal waist adjuster. Waist sizes are in inches. Available in various lengths.					

From **£17.50**

QUANTITY/SIZE REQUIRED

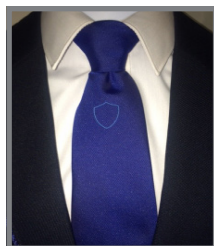


## ETONBURY SENIOR GIRLS FIT STITCH DOWN PLEAT TARTAN SKIRT

W/L 20/18	W/L 22/18	W/L 22/20	W/L 22/22	W/L 24/18	W/L 24/20	W/L 24/22	W/L 26/18	W/L 26/20	W/L 26/22
W/L 28/18	W/L 28/20	W/L 28/22	W/L 30/20	W/L 30/22	W/L 32/20	W/L 32/22	W/L 34/20	W/L 34/22	All round Internal All sizes

From **£21.99**

QUANTITY/SIZE REQUIRED



## ETONBURY CLIP ON TIE (Compulsory)

Made from 100% Polyester.

From **£7.99**

QUANTITY/SIZE REQUIRED



## ETONBURY ACADEMY | PE KIT (ALL YEARS)



### ETONBURY BOYS FIT TWO COLOUR PE POLO

AGE	SIZE	SIZE	SIZE	SIZE	SIZE	SIZE
9/10	XXS	XS	S	M	L	XL
Chest 26/28"	Chest 28/30"	Chest 30/32"	Chest 32/34"	Chest 34/36"	Chest 38/40"	Chest 42/44"

Featuring Endura Dri Fabric. Collar and Placket Detail

From **£13.50**

QUANTITY/SIZE REQUIRED



### ETONBURY GIRLS FIT TWO COLOUR PE POLO

AGE	SIZE	SIZE	SIZE	SIZE	SIZE	SIZE
9/10	XXS	XS	S	M	L	XL
Chest 26/28"	Chest 28/30"	Chest 30/32"	Chest 32/34"	Chest 34/36"	Chest 38/40"	Chest 42/44"

Featuring Endura Dri Fabric. Collar and Placket Detail

From **£13.50**

QUANTITY/SIZE REQUIRED



### ETONBURY UNISEX TWO COLOUR OUTDOOR TOP

AGE	SIZE	SIZE	SIZE	SIZE	SIZE	SIZE
9/10	XXS	XS	S	M	L	XL
Chest 26/28"	Chest 28/30"	Chest 30/32"	Chest 32/34"	Chest 34/36"	Chest 38/40"	Chest 42/44"

Featuring Endura Dri fabric. Collar detail and contrasting side panelling.

From **£15.50**

QUANTITY/SIZE REQUIRED



### ETONBURY PE ZIP TOP

CHEST	CHEST	CHEST	CHEST
26/28	30/32	34/36	38/40

From **£18.99**

QUANTITY/SIZE REQUIRED



### ETONBURY UNISEX SHADOW STRIPE SHORTS *(Compulsory)*

WAIST	WAIST	WAIST	WAIST	WAIST
22/24	26/28	30/32	34/36	38/40

Elasticated waist. Waist (to fit) 22/24in, 26/28in, 30/32, 34/36,

From **£5.25**

QUANTITY/SIZE REQUIRED



### ETONBURY GIRLS FIT SPIRO SKORT

SIZE	SIZE	SIZE	SIZE	SIZE	SIZE
9/10	11/12	S	M	L	XL
		Waist 26/28"	Waist 30"	Waist 32"	Waist 34/36"

Reflective Spiro print logo. Integral sport pant. Flat elastic waistband. Extremely lightweight.

From **£8.25**

QUANTITY/SIZE REQUIRED



### ETONBURY UNISEX PE SOCKS

SIZE	SIZE
1-5	6-11
LARGE BOYS	MENS

Stretch nylon. Shoe size: Large boys 1/5 and Mens 6/11

From **£5.50**

QUANTITY/SIZE REQUIRED

## ETONBURY ACADEMY | PE KIT (ALL YEARS)



### ETONBURY GIRLS BLACK SPORTS LEGGINGS

W/L 22/24 W/L 26/28 W/L 30/32 W/L 34/36 W/L 38/40

Black/silver 88 percent Nylon, 12 per cent Spandex. Wide comfortable elasticated waistband. Silver reflective tape trimming. Opaque fabric. Front leg vinyl.

From **£15.50**

QUANTITY/SIZE REQUIRED



### ETONBURY RHINO BASE LAYER ADULTS

CHEST 32/34 L/X Youth  
CHEST 34/36 XS  
CHEST 38/40 S/M  
CHEST 46/48 L / XL

Long sleeve turtleneck. Keeps you warm and dry in cold conditions. Fabric is lightweight, soft, easycare and dries quickly. Regulates temperature of the body.

From **£14.99**

QUANTITY/SIZE REQUIRED

Please note any garments which are a 38/40" chest and a 30" waist and above will incur VAT on top of the prices listed above.

## ETONBURY ACADEMY | ADDITIONAL ITEMS



### OPAQUE TIGHTS (Optional)

70 denier. Twin Pack. Fine comfort flatlock seams. Integral waist band - not cheap turned tunnel elastic. Only Du Pont Lycra. Available in two sizes - teens and ladies.

From **£6.25**

QUANTITY/SIZE REQUIRED



### SCHOOL WATER BOTTLE (Optional)

Clear 500ml plastic drinks bottle.

From **£2.75**

QUANTITY REQUIRED



### NAME LABELS (Optional)

By using our printed iron-on labels, your child's uniform and sports kit can be identified easily and efficiently. These labels can be ironed on anywhere inside your child's garment. Maximum of 17 characters. Packs of 25 at £3.50 or 50 at £5.00.

From **£3.99**

QUANTITY/SIZE REQUIRED



### WOVEN SEW IN LABELS (Optional)

Traditional 8mm sew in name tapes for sewing in to clothes x 72

From **£7.99**

QUANTITY/SIZE REQUIRED

## ETONBURY ACADEMY | ADDITIONAL ITEMS



### WOVEN SEW IN LABELS *(Optional)*

Traditional 8mm sew in name tapes for sewing in to clothes x 72

From **£7.99**

QUANTITY/SIZE REQUIRED



### SEAM TAPE *(Optional)*

Black iron on seam tape. For a secure, neat finish on hems.

From **99p**

QUANTITY/SIZE REQUIRED

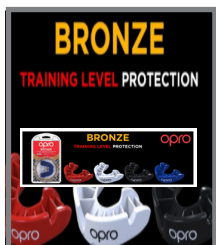


### MOUTHGUARDS

Tested in accordance with BSI DD-253-2001 and CE compliant. Boil and bite fitting. Available in junior and adult. N.B Colour may vary

From **£2.99**

QUANTITY/SIZE REQUIRED



### BRONZE TRAINING LEVEL MOUTHGUARD

Training level self-fit mouthguard. Gum Shield for Rugby, Hockey and other Contact Sports The impact resistant outer layer absorbs high impact blows and spreads the force over a larger area, shielding your teeth and gums from injury. Grips your teeth in all the right places.

PLEASE NOTE WE ARE UNABLE TO ACCEPT THIS ITEM BACK FOR EXCHANGE OR REFUND.

From **£6.50**

QUANTITY/SIZE REQUIRED



### PRECISION PRO SHIN & ANKLE PADS

BLACK/RED. Plastic PPCP shield. 6mm EVA foam backing. Stitched ankle sock with padding. Size is measured as height in cm (from top of head to toes) Medium - 140-160cm, Large 160-180cm.

From **£10.99**

QUANTITY/SIZE REQUIRED



### SHARPIE FINE MARKER

BLACK Fine Marker. Permanent on most hard to mark surfaces. Double fine fibre tip.

From **£2.50**

QUANTITY/SIZE REQUIRED



SCHOOLS

ORDER ONLINE

ORDER THE **ETONBURY ACADEMY**  
UNIFORM ONLINE AT  
[www.totalclothingshop.co.uk/etonbury](http://www.totalclothingshop.co.uk/etonbury)

ETONBURY CLOTHING SUPPLIED BY **TOTALCLOTHINGSHOP.CO.UK**

VISA  
MasterCard  
American Express

NEED HELP WITH AN ORDER? **CALL 01733 374705**

**ETONBURY ACADEMY**

HOME PRODUCTS CONTACT US LOGIN BASKET

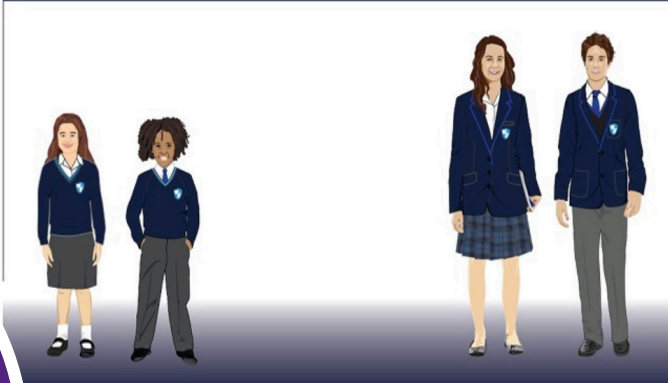
**TOTAL CLOTHING SHOP .CO.UK**

Our shop will re-open from Monday 12<sup>th</sup> April, Monday to Friday, 9am till 5pm.

Our normal hours will also resume for Click & Collect from Monday 12<sup>th</sup> April, 9am till 5pm Monday to Friday. Please wait to receive your shipment email before attempting to collect your order.


You are also able to order online for delivery to home or send to school (if this is available please contact our customer service).

Welcome to the Etonbury Academy Uniform Shop



Orders for school delivery will be delivered weekly into school on a Friday

**EARLY BIRD OFFER**  
*Get this...*  
**ULTIMATE HELIX OXFORD SCHOOL ESSENTIALS PENCIL CASE**  
**For £8.00**  
(RRP £15.00)  
Offer available from 25<sup>th</sup> May until 16<sup>th</sup> July 2021



**Contains:** 1x Large Clear Pencil Case | 1x Oxford Maths Set 30 cm Shatterproof Ruler | 4 Pack of Oxford Soft Grip Pens | Box of 12 2H pencils | 12 pack of Oxford Colouring Pencils | 1x Large Sleeved Eraser and Sharpener Set and a Pack of 4 Oxford Highlighters.

We would advise ordering before 12<sup>th</sup> August. Stock is arriving with us all the time, however lead times for our deliveries from overseas are taking longer than normal.

CUSTOMER SERVICE



SCHOOLS

## SHOP LOCATION

### HINTS & TIPS

Please check our website  
[www.totalclothing.co.uk](http://www.totalclothing.co.uk)  
for regular updates or click [here](#)  
to book a fitting appointment.



### HINTS & TIPS

Appointments will be  
available to book on line  
from Monday 7th June.

No 9 Botoiph Trading Estate,  
Oundle Road, Peterborough PE2 9QP  
(Turn onto Botoiph Bridge next to Hilton Van Hire)

01733 394758

[customerservices@totalclothing.co.uk](mailto:customerservices@totalclothing.co.uk)



SCHOOLS

[www.totalclothingshop.co.uk/etonbury](http://www.totalclothingshop.co.uk/etonbury)



## This image shows a full page of a handwriting practice worksheet. It consists of multiple sets of three horizontal dashed lines, evenly spaced across the entire page. These lines are designed to help children learn letter formation and alignment by providing a guide for the height and placement of their writing. The background is plain white, and there are no other markings or text present.



[www.totalclothingshop.co.uk/etonbury](http://www.totalclothingshop.co.uk/etonbury)



[illegible]

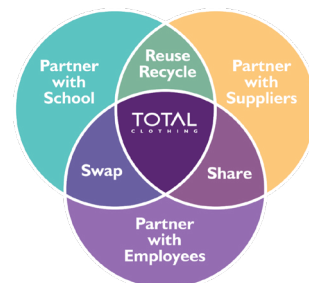
[www.totalclothingshop.co.uk/etonbury](http://www.totalclothingshop.co.uk/etonbury)



## This image shows a single sheet of white paper with ten evenly spaced horizontal dotted lines. The lines are light gray and extend across the width of the page. There is no handwriting or other markings on the paper.

As part of our recycling programme we partnership with schools overseas and the UK to ensure that no garments enter landfill.

**Second-hand uniforms are becoming a credible sales channel and we host Swapping events at our store to enable parents to re-cycle grown out of school uniform rather than it going into landfill. “Long Live School Uniforms.”**



**TOTAL**  
CLOTHING

No 9 Botolph Trading Estate, Oundle Road, Peterborough PE2 9QP  
Call 01733 394758 [customerservices@totalclothing.co.uk](mailto:customerservices@totalclothing.co.uk)

[www.totalclothing.co.uk](http://www.totalclothing.co.uk)