

TOTAL C L O T H I N G

YOUR SCHOOL UNIFORM SUPPLIER



SCHOOLS

**EARLY
BIRD OFFER**

**FREE POSTAGE
& PACKING**

**When you spend
over £50.00**

*(From 1st until
30th June 2020).*



E T N B U R Y
A C A D E M Y

UNIFORM GUIDE AND PRICE LIST

www.totalclothingshop.co.uk/etonbury

Like us on
facebook 

*To stay up to date
with our latest offers.*

At the time of producing this leaflet we are still operating under government guidelines during the Covid 19 pandemic. Please check our website: www.totalclothing.co.uk for the latest information updates.

**PLEASE ORDER BY
THURSDAY 13TH AUGUST**
*To guarantee delivery
before Back to School.*



SCHOOLS

INTRODUCTION

Dear Parents & Carers

Watch this [video](#) for all of the Etonbury Academy uniform requirements and helpful sizing hints.

We have designed this booklet to help you to order your school uniform with ease, whilst understanding the requirements from the school. Given the current Covid-19 situation, we have added some additional information to try and make it as easy as possible.

We understand how difficult it can be when you are buying secondary school uniform for the first time (or even second or third time) as children's sizes can be so different. With this in mind, we have designed this booklet to help you every step of the way.

We start with a [Uniform Measuring Guide](#) to ensure that you measure correctly for each garment. On this page you will see how to measure for each part of the school uniform you will need.

We have also included a [Hints & Tips](#) section on buying your school uniform.

You will also see a [Uniform Policy](#) which tells you how the uniform should be worn and what is not acceptable.

On the pages that follow there is a comprehensive [Uniform Size Guide](#) detailing the garments required for your school uniform. Garments will be marked compulsory and optional so you can see what you need to buy now and what you can maybe purchase later.

We always encourage parents to order as soon as possible to ensure you will have the correct uniform for back to school.

Lastly you will see the link to order your school uniform on-line. This can be done via your school website.

We have a returns policy of 28 days from your purchase to return or exchange of your garments. It would be great if you could send returns as soon as possible to help our stock levels.

We are here to help you get the best fit for school uniform for your child. If you have any questions please call our friendly customer care team on **01733 394758** or via email at customerservices@totalclothing.co.uk who will be happy to advise you.

Kind regards

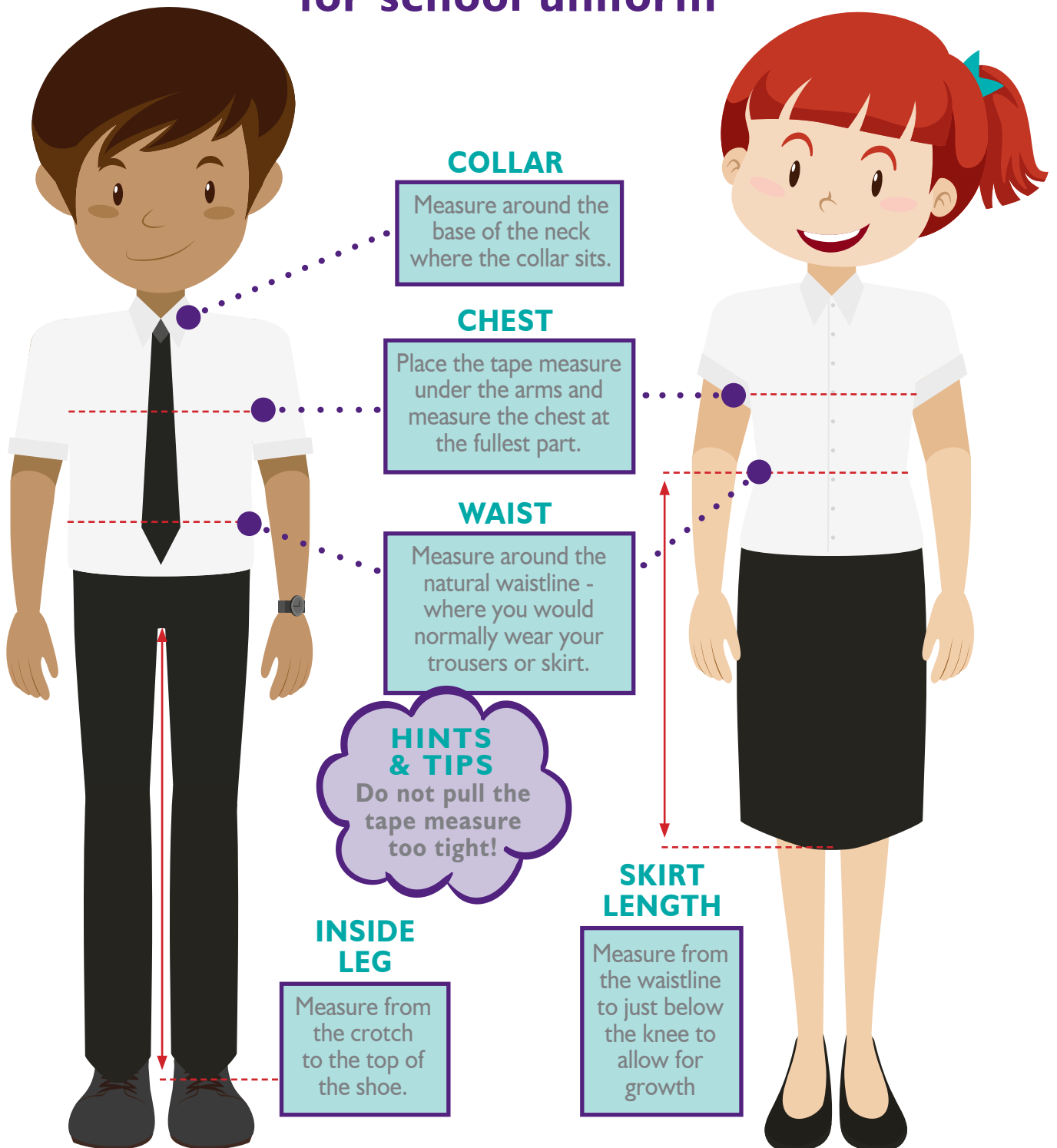
Christine, Laura, James and Ben
The Schools Team, Total Clothing Ltd



SCHOOLS

UNIFORM MEASURING GUIDE

How to measure your child for school uniform





SCHOOLS

ETONBURY ACADEMY | GENERAL UNIFORM

YEARS 5 & YEAR 6

(BOYS FIT) (GIRLS FIT)

Etonbury jumper (<i>with badge</i>)	Etonbury jumper (<i>with badge</i>)
White button neck shirt (<i>long or short sleeved</i>)	White open neck blouse
Etonbury tie	Grey trousers or skirt
Grey trousers (<i>NOT skinny fit</i>)	Navy knee high socks/tights
Plain black or navy socks	(<i>White ankle socks optional Summer term</i>)
Black leather shoes	Black leather shoes

YEARS 7 & ABOVE

(BOYS FIT) (GIRLS FIT)

Etonbury blazer	Etonbury blazer
Etonbury jumper (<i>optional</i>)	Etonbury jumper (<i>optional</i>)
White button neck shirt (<i>long or short sleeved</i>)	White open neck blouse
Etonbury tie	Etonbury skirt or grey trousers
Grey trousers (<i>NOT skinny fit</i>)	Navy knee high socks/tights
Plain black or navy socks	(<i>White ankle socks optional Summer term</i>)
Black leather shoes	Black leather shoes

PE KIT (All Years)

(BOYS FIT) (GIRLS FIT)

Etonbury Polo shirt	Etonbury Polo shirt
Navy Blue shorts	Navy blue skirt or shorts
Etonbury reversible outdoor top	Etonbury reversible outdoor top
Navy Fleece with logo (<i>optional</i>)	Navy Fleece with logo (<i>optional</i>)
Navy Blue socks (<i>knee high</i>)	Navy Blue socks (<i>knee high</i>)
Trainers	Trainers
Football boots (<i>astro turf boots are not suitable</i>)	Football boots (<i>astro turf boots are not suitable</i>)
Navy blue tracksuit bottoms (<i>optional</i>)	Navy blue tracksuit bottoms (<i>optional</i>)
Baselayer of any colour (<i>optional</i>)	Baselayer of any colour (<i>optional</i>)
Gum shield	Gum shield
Shin pads	Shin pads



SCHOOLS

www.totalclothingshop.co.uk/etonbury



HINTS & TIPS | SPECIFIC TO YOUR SCHOOL

HINTS & TIPS
YEAR 7-11 SKIRTS

Skirts have an adjustable waist. Fit just below the knee to allow for growth.

HINTS & TIPS
SCHOOL TIES

Girls do not need to wear a tie. Therefore make sure you purchase 'Rever Collar Blouses' as opposed to button-up blouses.

HINTS & TIPS
BLAZERS

You may want to go for a slightly bigger blazer size if your child will be wearing a jumper during the winter months. Make sure when you try on your blazer the sleeves come down to the knuckles to allow for growth and across the shoulders there is also room for growth.

HINTS & TIPS
SCHOOL TIES

There are two lengths of ties available
(see webshop).

HINTS & TIPS
BOYS TROUSERS

These fit true to size and have an adjustable waist.

HINTS & TIPS
PE TOPS

PE Tops should always be bought slightly bigger to allow for growth and ease of taking on and off in a hurry when changing.

HINTS & TIPS
PE SHORTS

The PE Shorts have a draw string to pull the waist in tighter.

HINTS & TIPS
SKORTS

These come in waist sizes and have an elasticated waist, use your skirt waist measurement as a guide.

HINTS & TIPS
DON'T FORGET

Don't forget name labels, water bottles and mouth guards!

ETONBURY ACADEMY | YEARS 5 & 6 UNIFORM



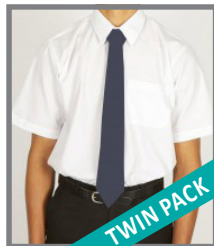
ETONBURY MAGICFIT V NECK JUMPER *(Compulsory)*

CHEST 26 CHEST 28 CHEST 30 CHEST 32 CHEST 34 CHEST 36

Soft handle but hard wearing. Ribbed cuffs and welt. Chest size 28in - 36in

From **£14.35**

QUANTITY/SIZE REQUIRED



ETONBURY BOYS FIT SHORT SLEEVE SHIRTS

NECK 11 NECK 11.5 NECK 12.5 NECK 13.5 NECK 13 NECK 14 NECK 14.5 NECK 15 NECK 15.5 NECK 16 NECK 16.5 NECK 17

Two piece collar, chest pocket and short sleeves. Collar sizes available 12.5 inches to 17 inches. Easy care and machine washable. Twin pack.

From **£12.50**

QUANTITY/SIZE REQUIRED



ETONBURY BOYS FIT LONG SLEEVE SHIRTS

NECK 11 NECK 11.5 NECK 12.5 NECK 13.5 NECK 13 NECK 14 NECK 14.5 NECK 15 NECK 15.5 NECK 16 NECK 16.5 NECK 17

Two piece collar, chest pocket, rounded cuff with two button fastening. Twin pack. Easy care and machine washable. Available in collar size 12.5 inches to 17 inches

From **£12.50**

QUANTITY/SIZE REQUIRED



ETONBURY GIRLS FIT SHORT SLEEVE REVER COLLAR BLOUSES

CHEST 26 CHEST 28 CHEST 30 CHEST 32 CHEST 34 CHEST 36 CHEST 38 CHEST 40 CHEST 42 CHEST 44

Short sleeve blouses in easycare fabric, with a two piece collar. Twin pack. Machine washable and easy care. Sizes available 26 inches to 44 inches.

From **£12.50**

QUANTITY/SIZE REQUIRED



ETONBURY GIRLS FIT LONG SLEEVE REVER COLLAR BLOUSES

CHEST 26 CHEST 28 CHEST 30 CHEST 32 CHEST 34 CHEST 36 CHEST 38 CHEST 40 CHEST 42 CHEST 44

Long sleeve blouses in easycare fabric, with a two piece collar. Twin pack. Machine washable and easy care. Sizes available 26 inches to 44 inches.

From **£12.50**

QUANTITY/SIZE REQUIRED



ETONBURY SLIMBRIDGE UNISEX TROUSERS

W/L 26/28 W/L 28/30 W/L 30/30 W/L 30/32 W/L 30/34 W/L 32/30 W/L 32/32 W/L 32/34 W/L 34/32 W/L 34/34 W/L 36/32
REGULAR REGULAR SHORT REGULAR LONG SHORT REGULAR LONG REGULAR LONG REGULAR

Grey fashionable slim fit unisex trousers. Flat front. Internal waist adjuster. Two side pockets plus back pocket with button. Belt loops.

From **£16.99**

QUANTITY/SIZE REQUIRED

ETONBURY ACADEMY | YEARS 5 & 6 UNIFORM



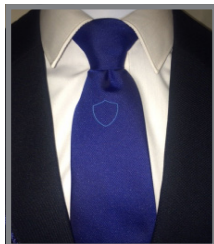
ETONBURY GIRLS FIT STITCH DOWN PLEAT SKIRT

AGE 9 AGE 10 AGE 11 AGE 12

All round stitched down grey pleat skirt. Zip fastening on ages 10 and above. Internal waist adjuster. Sizes are as follows - 9 Years W: 23.5 x L: 15.5 inches. 10 Years W: 24.5 x L: 16 inches. 11 Years W: 25 x L: 17 inches. 12 Years W: 25.5 x L: 17.5 inches.

From **£12.99**

QUANTITY/SIZE REQUIRED



ETONBURY CLIP ON TIE (Compulsory)

Made from 100% Polyester.

From **£6.99**

QUANTITY/SIZE REQUIRED

ETONBURY ACADEMY | YEARS 7, 8, 9 & 10 UNIFORM



ETONBURY BOYS FIT BLAZER (Compulsory)

CHEST 28 CHEST 30 CHEST 32 CHEST 34 CHEST 36 CHEST 38 CHEST 40 CHEST 42 CHEST 44 CHEST 46

Made from 100% woven Polyester twill. With internal zip pockets, Maxtech Plus stain resistant finish. Available in Chest Sizes to fit 28in, 30in, 32in, 34in, 36in, 38in, 40in, 42in, 44in and 46in.

From **£27.50**

QUANTITY/SIZE REQUIRED



ETONBURY GIRLS FIT BLAZER (Compulsory)

CHEST 28 CHEST 30 CHEST 32 CHEST 34 CHEST 36 CHEST 38 CHEST 40 CHEST 42 CHEST 44 CHEST 46

SIZE 6 SIZE 8 SIZE 10 SIZE 12 SIZE 14 SIZE 16 SIZE 18 SIZE 20 SIZE 22 SIZE 24

Made from 100% woven Polyester twill. With internal zip pockets, Maxtech Plus stain resistant finish.

From **£27.50**

QUANTITY/SIZE REQUIRED



ETONBURY MAGICFIT V NECK JUMPER (Optional)

CHEST 26 CHEST 28 CHEST 30 CHEST 32 CHEST 34 CHEST 36 CHEST 38 CHEST 40

Soft handle but hard wearing. Ribbed cuffs and welt.

From **£15.25**

QUANTITY/SIZE REQUIRED



ETONBURY BOYS FIT SHORT SLEEVE SHIRTS

NECK 12.5 NECK 13.5 NECK 13 NECK 14 NECK 14.5 NECK 15 NECK 15.5 NECK 16 NECK 16.5 NECK 17

Two piece collar, chest pocket and short sleeves. Collar sizes available 12.5 inches to 17 inches. Easy care and machine washable. Twin pack.

From **£12.50**

QUANTITY/SIZE REQUIRED

ETONBURY ACADEMY | YEARS 7, 8, 9 & 10 UNIFORM



ETONBURY BOYS FIT LONG SLEEVE SHIRTS

- NECK 12.5
- NECK 13.5
- NECK 13
- NECK 14
- NECK 14.5
- NECK 15
- NECK 15.5
- NECK 16
- NECK 16.5
- NECK 17

Two piece collar, chest pocket, rounded cuff with two button fastening. Twin pack. Easy care and machine washable. Available in collar size 12.5 inches to 17 inches

From £12.50

QUANTITY/SIZE REQUIRED



ETONBURY GIRLS FIT SHORT SLEEVE REVER COLLAR BLOUSES

- CHEST 26
- CHEST 28
- CHEST 30
- CHEST 32
- CHEST 34
- CHEST 36
- CHEST 38
- CHEST 40
- CHEST 42
- CHEST 44

Short sleeve blouses in easycare fabric, with a two piece collar. Twin pack. Machine washable and easy care. Sizes available 26 inches to 44 inches.

From £12.50

QUANTITY/SIZE REQUIRED



ETONBURY GIRLS FIT LONG SLEEVE REVER COLLAR BLOUSES

- CHEST 26
- CHEST 28
- CHEST 30
- CHEST 32
- CHEST 34
- CHEST 36
- CHEST 38
- CHEST 40
- CHEST 42
- CHEST 44

Short sleeve blouses in easycare fabric, with a two piece collar. Twin pack. Machine washable and easy care. Sizes available 26 inches to 44 inches.

From £12.50

QUANTITY/SIZE REQUIRED



ETONBURY BOYS SLIMBRIDGE UNISEX TROUSERS

- W/L 26/28 REGULAR
- W/L 28/30 REGULAR
- W/L 30/30 SHORT
- W/L 30/32 REGULAR
- W/L 30/34 LONG
- W/L 32/30 SHORT
- W/L 32/32 REGULAR
- W/L 32/34 LONG
- W/L 34/32 REGULAR
- W/L 34/34 LONG
- W/L 36/32 REGULAR

Grey, fashionable slim fit. Flat front. Internal waist adjuster. Two side pockets plus back pocket with button. Belt loops.

From £16.99

QUANTITY/SIZE REQUIRED



ETONBURY GIRLS FIT TWIN POCKET TROUSERS

- AGE 9
- AGE 10
- W/L 22/28
- W/L 22/30
- W/L 24/28
- W/L 24/30
- W/L 26/28
- W/L 26/30
- W/L 28/28
- W/L 28/30
- W/L 30/30
- W/L 32/30
- W/L 32/32
- W/L 34/30
- W/L 36/30

Grey, senior trouser with slim leg shape and two front welt pockets. Back waist button tab detail

From £16.50

QUANTITY/SIZE REQUIRED



ETONBURY SENIOR GIRLS FIT STITCH DOWN PLEAT TARTAN SKIRT

- W/L 20/18
- W/L 22/18
- W/L 22/20
- W/L 22/22
- W/L 24/18
- W/L 24/20
- W/L 24/22
- W/L 26/18
- W/L 26/20
- W/L 26/22
- W/L 28/18
- W/L 28/20
- W/L 28/22
- W/L 30/20
- W/L 30/22
- W/L 32/20
- W/L 32/22
- W/L 34/20
- W/L 34/22

All round stitch down pleat, Internal back waist adjuster. All sizes are in inches. Two lengths available.

From £21.50

QUANTITY/SIZE REQUIRED



ETONBURY CLIP ON TIE (Compulsory)

Made from 100% Polyester.

From £7.99

QUANTITY/SIZE REQUIRED

ETONBURY ACADEMY | PE KIT (ALL YEARS)



ETONBURY BOYS FIT TWO COLOUR PE POLO



Chest 26/28" Chest 28/30" Chest 30/32" Chest 32/34" Chest 34/36" Chest 38/40" Chest 42/44"

Featuring Endura Dri Fabric. Collar and Placket Detail

From **£12.80**

QUANTITY/SIZE REQUIRED



ETONBURY GIRLS FIT TWO COLOUR PE POLO



Chest 26/28" Chest 28/30" Chest 30/32" Chest 32/34" Chest 34/36" Chest 38/40" Chest 42/44"

Featuring Endura Dri Fabric. Collar and Placket Detail

From **£12.80**

QUANTITY/SIZE REQUIRED



ETONBURY UNISEX TWO COLOUR OUTDOOR TOP



Chest 26/28" Chest 28/30" Chest 30/32" Chest 32/34" Chest 34/36" Chest 38/40" Chest 42/44"

Featuring Endura Dri fabric. Collar detail and contrasting side panelling.

From **£14.99**

QUANTITY/SIZE REQUIRED



ETONBURY PE MICROFLEECE



Chest 26/28" Chest 28/30" Chest 30/32" Chest 32/34" Chest 34/36" Chest 38/40" Chest 42/44"

Navy, Half Zip Microfleece.

From **£13.99**

QUANTITY/SIZE REQUIRED



ETONBURY REFLECTOR TRACKSUIT TOP



Soft peach feel microfibre fabric. Full length zip. Part mesh lined with elasticated cuffs and waist. Reflective piping for high visibility. Two zipped pockets.

From **£14.50**

QUANTITY/SIZE REQUIRED



ETONBURY UNISEX SHADOW STRIPE SHORTS (Compulsory)



Elasticated waist. Waist (to fit) 22/24in, 26/28in, 30/32, 34/36,

From **£4.75**

QUANTITY/SIZE REQUIRED



ETONBURY GIRLS FIT SPIRO SKORT



Waist 26/28" Waist 30" Waist 32" Waist 34/36"

Reflective Spiro print logo. Integral sport pant. Flat elastic waistband. Extremely lightweight.

From **£7.70**

QUANTITY/SIZE REQUIRED



SCHOOLS

ETONBURY ACADEMY | PE KIT (ALL YEARS)



ETONBURY UNISEX PE SOCKS

SIZE
1-5
LARGE BOYS

SIZE
6-11
MENS

Stretch nylon. Shoe size: Large boys 1/5 and Mens 6/11

From **£4.99**

QUANTITY/SIZE REQUIRED



ETONBURY RHINO BASE LAYER ADULTS

CHEST
32/34
L/X Youth

CHEST
34/36
XS

CHEST
38/40
S/M

CHEST
46/48
L / XL

Long sleeve turtleneck. Keeps you warm and dry in cold conditions. Fabric is lightweight, soft, easycare and dries quickly. Regulates temperature of the body.

From **£14.99**

QUANTITY/SIZE REQUIRED

Please note any garments which are a 38/40" chest and a 30" waist and above will incur VAT on top of the prices listed above.



www.totalclothingshop.co.uk/etonbury

ETONBURY ACADEMY | ADDITIONAL ITEMS



SCHOOL WATER BOTTLE

500ml plastic drinks bottle.

£2.75

QUANTITY REQUIRED



MOUTHGUARDS

Clear Mouthguards. Custom fit. Available in junior and senior. *N.B Colour may vary

£2.99

QUANTITY/SIZE REQUIRED



NAME LABELS

By using our printed iron-on labels, your child's uniform and sports kit can be identified easily and efficiently. These labels can be ironed on anywhere inside your child's garment.

Maximum of 17 characters.

Packs of 25 at £3.50 or 50 at £5.00.

£3.99

QUANTITY/SIZE REQUIRED






SCHOOLS

ORDER ONLINE

ORDER THE **ETONBURY ACADEMY**
UNIFORM ONLINE AT
www.totalclothingshop.co.uk/etonbury

ETONBURY CLOTHING SUPPLIED BY TOTALCLOTHINGSHOP.CO.UK VISA MasterCard Apple Pay

 **ETONBURY ACADEMY** NEED HELP WITH AN ORDER? CALL 01733 374705 **TOTAL CLOTHING SHOP .CO.UK**


HOME PRODUCTS CONTACT US  LOGIN  BASKET

Due to the latest government guidelines on the Coronavirus, we have now suspended production at our warehouse.

Orders can still be placed on line and will be despatched as soon as restrictions are lifted and we are able to.

Thank you for your support and please stay safe.

Welcome to the Etonbury Academy Uniform Shop



Orders for school delivery will be delivered weekly into school on a Friday

...OTHING ...NCE ...QU ...CY CONTACT US

EARLY BIRD OFFER
FREE POSTAGE & PACKING
When you spend over **£50.00**
(From 1st until 30th June 2020).

HINTS & TIPS
ORDER WITH A FRIEND!
Have you thought about ordering with a friend to reach the free carriage value?



SCHOOLS

SHOWROOM LOCATION

HINTS & TIPS

Please check our website www.totalclothing.co.uk before travelling to our showroom.

Opening times may alter and we may be taking appointments only to ensure social distancing. We will update the website.

If you do have any queries, please contact our Customers Services Team who would be happy to help



No 9 Botolph Trading Estate,
Oundle Road, Peterborough PE2 9QP
(Turn onto Botolph Bridge next to Hilton Van Hire)

01733 394758

customerservices@totalclothing.co.uk



SCHOOLS

www.totalclothingshop.co.uk/etonbury



SCHOOLS

NOTES

Area with horizontal dashed lines for writing notes.



www.totalclothingshop.co.uk/etonbury



SCHOOLS

NOTES

Area with horizontal dashed lines for writing notes.



www.totalclothingshop.co.uk/etonbury

WE DO LOTS MORE THAN SCHOOL UNIFORM...



Trip or leavers hoodies - Sell your trip hoodies online - no hassle!



Creating professional, affordable personalised clothing. In house printing and embroidery.



We can supply all of your printed and embroidered clothing either in bulk or via your own online club shop.



Create online personalised clothing campaigns to raise funds.

CREATING PROFESSIONAL, AFFORDABLE PERSONALISED CLOTHING

TOTAL
C L O T H I N G

No 9 Botolph Trading Estate, Oundle Road, Peterborough PE2 9QP
Call 01733 394758 sales@totalclothing.co.uk

www.totalclothing.co.uk