



ETONBURY
ACADEMY



Information for Parents on Key Stage 2 SATs



ETNBURY
ACADEMY



What does SATs stand for?



Statutory Assessment Tasks and Tests (also includes Teacher Assessment)

At the end of Key Stage 1 (at age 7) and at the end of Key Stage 2 (at age 11)





What does teacher assessment involve and is it different from testing?

- Teacher assessment draws together everything the teacher or teachers know about a child, including normal class lessons, observations, marked work and school assessments.
- Teacher assessment is not a 'snapshot' like tests and is therefore more reliable.
- Due to the above, there can be a difference between teacher assessment results and test levels.



ETNBURY
ACADEMY



Teacher Assessments:

English:

- Speaking and Listening
- Reading
- Writing

Maths:

- Using and Applying
- Number and Algebra
- Shape, Space and Measures
- Handling Data



ETN BURY
ACADEMY



Teacher Assessments: (cont.)

Science:

- Scientific Enquiry
- Life Processes
- Materials and their Properties
- Physical Processes



ETNBURY
ACADEMY



When do KS2 tests happen?

- This year the test dates will be from Monday 8th to Thursday 11th May.
- Please avoid taking your child out of school during this time and in the weeks leading up to the tests.
- This will be a busy week!



ETONBURY
ACADEMY



What do the tests involve?





ETNBURY
ACADEMY



Year 6 Literacy SATS

- Reading
- Grammar, Punctuation, Spelling

30th January 2016

ETA-
English@bestacademies.org
.uk



ETNBURY
ACADEMY



Reading

- All year 6 students are now on accelerated reader.
- This programme tracks, monitors and recommends books for students to read that are challenging yet appropriate to their development as a reader.
- This is helping students challenge themselves and make progress as well as making them read for fun.



Reading

- What's a good amount of time to read per day?
- A. 15 minutes
- B. 35 minutes
- C. 45 minutes



The Reading paper

- The Reading paper has around 30-40 questions
- The Reading paper is worth a total of 50 marks
- We expect this to be as difficult as last years
- Like a lot of schools, we're still trying to nail down exactly where the focus and weighting will fall
- These are the focuses for the reading test paper:



ETNBURY
ACADEMY



- ***Give or explain the meaning of words in context.***
- ***Retrieve and record information or identify key details.***



ETNBURY
ACADEMY



- **Summarise ideas from more than one paragraph.**
- ***Make inferences from the text and justify with evidence from the text.***



ETONBURY
ACADEMY



- **Predict what might happen from details explicit and implied.**
- **Make comparisons within the text.**



- **Identify or explain**
 - **how content contributes to the whole text.**
 - **how meaning is enhanced through choice of words and phrases.**



ETNBURY
ACADEMY



What can you do?

- You can help your child at home with these focuses relatively easily.
- First, ensure they are reading for the optimal 35-45 minutes a day
- Then, ask lots of questions about what they are reading – test their understanding.
- Look at some of the awkward words and ask them what it could mean.



The GPS paper

- The Grammar and Punctuation paper has 50 questions and is worth 50 marks
- The Spelling paper is worth a total of 20 marks
- We expect this to be as hard as last year



The GPS paper

- **Sentence grammar** is tested through both identifying and (re)writing sentences that are grammatically (in)correct and locating and recognising grammatical functions in sentences given to them.
- **Punctuation** is tested through identifying and (re)writing sentences that are (in)correctly punctuated.
- **Vocabulary** is tested through identifying and (re)writing sentences in which a word is used (in)correctly.



For example

Q: Which of these words means the same as: *cheerful*

A: grumpy/happy/sleepy/dopey

Q: Which of these words is the *determiner* in this sentence?

A: I ate a few cakes before I came here tonight.



What you can do - GPS

- There are plenty of other ways to help your child revise for the test:
- Copy some sentences from a book and get them
 - To underline either the main or subordinate clause
 - To identify verb phrases and tenses
 - To locate nouns, adjectives, adverbs and other parts of speech



What you can do - GPS

- Write down some unpunctuated sentences for your child to punctuate correctly (or copy, edit and paste from an internet article)
- Call out a word and ask your child to tell you a
 - ***synonym*** (a word that means the same) or an
 - ***antonym*** (a word that means the opposite).



What you can do - GPS

- There are plenty of other ways to help your child revise for the test:
- When writing letters or emails, encourage your child to add an adjective or adverb to a sentence
- (e.g. 'Thank you for my **wonderful** birthday present')
- If your child asks you a question, ask how he would rephrase it as a command (or vice versa!)
- (e.g. 'Can you make me a drink?' becomes, 'Make me a drink!')



ETNBURY
ACADEMY



- We have printed a book with the grammatical terms and what they mean and how they work.
- You can collect a copy at the end of the talk.
- We'll make this available as well via parentmail this week.



ETNBURY
ACADEMY



Spelling

- Spelling tests will focus on the specific areas / rules which children need to be confident on.
- Additionally, classes will be getting specific focuses from their class teachers, dependent on their needs or areas to develop.



What can you do - spelling

- There is a master list of KS2 words and these can be sent via parentmail if enough of you would like them- they are easy enough to find online however.
- Please try to do spot checks on certain words or test them on spellings of complex everyday words.



ETONBURY
ACADEMY



How to read the questions

- *Instruction* – what to do
- *Direction* – where to look
- *Focus* – what to focus on / write about



ETONBURY
ACADEMY



Instruction

- Look at the question carefully
- Find the key words before replying.



ETNBURY
ACADEMY



Direction

- The questions will usually tell the students where the answer will be, however vague.
- This is the only place students should look for the answers.



ETNBURY
ACADEMY



Focus

- This is what the student needs to make sure they cover in their response.
- If they ask for one word, then one word is all they need to write – they will lose marks if they do not do *precisely* what is asked of them.



ETONBURY
ACADEMY



MATHS





ETONBURY
ACADEMY



What is my child
tested on?

- *Number
- *Geometry
- *Ratio
- *Measurement
- *Statistics



ETONBURY
ACADEMY



The Maths Tests

What do the papers look like?



ETNBURY
ACADEMY



Paper 1

- Arithmetic paper – context free questions
- Out of 40 marks
- Most questions worth 1 mark
- Tests addition, subtraction, multiplication, division
- Also tests fractions, decimals and percentages

This is the new paper and is where most of our students will pick up a lot of marks.



ETN BURY
ACADEMY



5

$$1,034 + 586 =$$

1 mark



ETONBURY
ACADEMY



10

$$\frac{4}{5} - \frac{1}{5} =$$

1 mark



22

$$12 - 6.01 =$$

1 mark

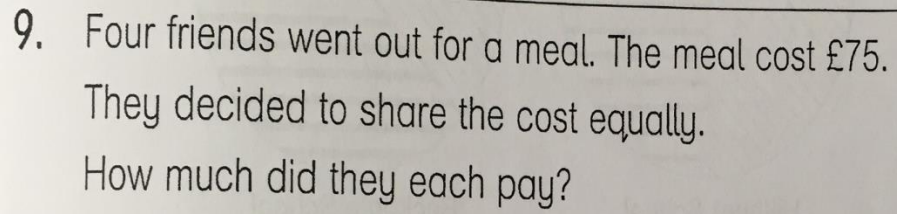


ETONBURY
ACADEMY

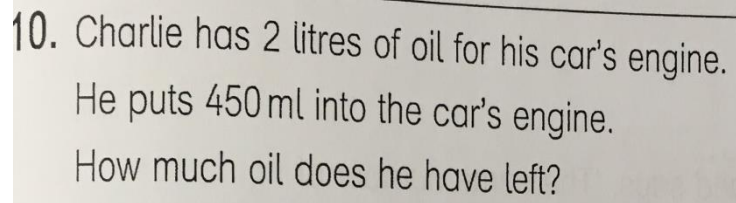


Papers 2 and 3


- Reasoning papers
- Out of 35 marks each
- Questions worth 1 or 2 marks
- Tests maths used in real life (a bit of everything)
- Lasts 40 minutes each



1 mark



A blank sheet of graph paper with a grid pattern. The grid consists of small squares formed by thin black lines. There are approximately 20 columns and 15 rows visible. A larger rectangular area on the right side of the page is outlined with a thicker border, possibly indicating a designated space for a drawing or diagram. The paper has a slightly off-white or light gray tone.



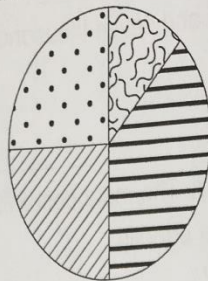


Year 6 Autumn 2

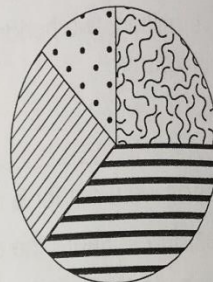
11. Children at two schools chose different sports.

The pie charts show the results.

-  Football
-  Netball
-  Athletics
-  Gymnastics



Hillbury School
100 pupils



Beckdale School
160 pupils

Answer these questions.

a) Which two sports were chosen by equal numbers of children at Hillbury School?

 and

b) At Beckdale School, a quarter of the children chose athletics.
How many children chose football at Beckdale School?

 children

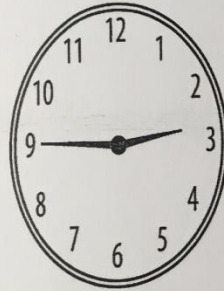
c) Tammy looks at both pie charts and says, 'The same number of children at both schools chose athletics.'

Explain why Tammy is wrong.



12

The clock shows the time that Kayla and Jon parked their cars at the fair.



Car park 45p
for 20 minutes

I left the fair
at 16:30;
Jon left the fair
only 5 minutes
before me but
he paid 45p less.

Explain why this happened.



A box of 4 tins of the same tomato soup costs £3.60

Show
your
method

What is the difference in the cost of 1 tin between the two boxes? p



How can you help your child prepare for SATs

- * Mentally adding and subtracting numbers (not just small ones)
- * Times tables and division facts (out of order)
- * Reading and writing large and decimal numbers
- * Count in 1s, 10s, 100s.....2s, 5s.....4s, 6s, 8s forwards and backwards
- * Using estimation
- * Cook together, measuring ingredients on scales
- * Tip out purse and count it, talk about prices and how they are written, especially looking at change



ETN BURY
ACADEMY



- * MyMaths
 - * Sumdog
 - * Woodland maths games
 - * Rising Stars books
-
- * Little and often

How can you help your
child to prepare for SATs



ETNBURY
ACADEMY



Written Methods ... all found in your calculation policy

Addition –column addition.

Subtraction – column subtraction or a numberline – think about the question.

Multiplication – grid method or column multiplication – most use column but grid is still perfectly fine to use if they get the correct answer!

Division – bus stop method for short and long division.

Never attempt to show a method to your child that they do not know – at this point its better to consolidate the



How is SATs week organised?

- A timetable is issued to school, telling us on which days tests must be administered.
- We can determine at what time tests begin.
- All children must sit the tests at the same time.
- Tests are completed in classrooms, with any displays that may help covered over.
- The LA monitor 10% of schools per year.
- Children are divided into groups for test administration to ensure they are properly supported and feel secure.



What help can children have?

- In the reading test, children must read the text and questions by themselves, but may have help recording their answers, if this is done in a normal classroom situation.
- In maths, teachers can read questions to any child who asks.
- Also in the SPAG test, children can ask for questions read to them but nothing can be explained.



How can we help?

- In school we have put a number of strategies into place:
- All staff in the school are working together to ensure that 'Sats type language' is used in their lessons, so it becomes the norm for pupils.
- Rising Stars books have been ordered as well as testbase which allows pupils to practise real past Sats questions , this will encourage and develop both their skills and self confidence.
- We have invested in a range of ICT Programmes including SAT's Bootcamp and Sumdog which allows the pupils to revise in a fun and interactive way.



ETNBURY
ACADEMY



How we can help- Clubs.

- After school homework club Monday-Thursday 3.30-4.30. All welcome includes a biscuit.
- Easter School, this is free, fun and helpful! It will be running the second week of the holidays between the 10th -13th April. The Pupils have help revising key skills in Maths and English with support of Staff. Very successful last year.



How we can help- Study Week

Workshops (external)	Workshops (internal)	Workshops (internal)
Positively Mad	Problem Solving	Healthy Eating
Yoga	Mindfulness	Times Table Tricks
Weights and Measures	Planning Time	Kung Fu Punctuation
Mind Maps	Memory Skills	Literacy
Meditation	Problem Solving	Numeracy
Happy Puzzle Company (maths)	Computers to Aid Revision	General Revision Techniques



ETNBURY
ACADEMY



How can parents help?

- The best help is by taking an interest in your child's learning and progress. Giving positive encouragement.
- Attending meetings and parents evenings.
- Supporting regular and thorough home learning.
- Fun websites: MyMaths/BBC Bitesize.
- Not putting children under too much pressure.
- Ensuring children arrive for tests:
 - in good time
 - with equipment – pen, water bottle, snack, etc.,
 - having had breakfast
 - having gone to bed at a reasonable time!



ETNBURY
ACADEMY



How can parents help?

Attendance

- Attendance throughout the Year is Vital, not just during SATs week.
- We are now revising covering Sat's Skills every day, so for every day your child has off, that means they have missed valuable information.



ETONBURY
ACADEMY



Important Dates.

- 20th-24th Feb Study Skills Week.
- 27th Feb- 2nd March – Mock SATS week.
- 10-13th April- Easter School.
- SATS Week 8th- 11th May.



ETNBURY
ACADEMY



2017 Test Timetable

Date

Monday 8 May 2017

Activity

English reading

Tuesday 9 May 2017
and

English grammar, punctuation
spelling Paper 1: questions

English grammar, punctuation and
spelling Paper 2: spelling

Wednesday 10 May 2017

Mathematics Paper 1: arithmetic
Mathematics Paper 2: reasoning

Thursday 11 May 2017

Mathematics Paper 3: reasoning



ETNBURY
ACADEMY



Reporting Results

Reading, SPAG and maths tests are all externally marked.

Test results are returned to the school in July and will be reported, along with teacher assessments, to parents by the end of the year.



ETNBURY
ACADEMY



So to sum it all up..

- www.youtube.com/watch?feature=youtu.be&v=fC2yhTEtk4o&app=desktop



ETONBURY
ACADEMY



Hopefully this has been helpful
and not daunting!
Thanks for coming
along this evening!

